

hoops & yoyo

Valentine's Day

CANDY BOX



----- =Fold

———— =Cut

▨ =Glue

Instructions

1. Print out box
2. Cut out box.
3. Pre-fold along dotted lines.
4. Glue or use two sided tape to attach the tabs to the inside of the box.

Tips

- For best results use a heavier paper or card stock if your printer will accept heavier paper.
- You can also mount the print out to card stock using a spray adhesive or glue.

Glue or Tape Here



Glue or Tape Here

for my valentine...

i'd give you a hug but that's just not enough,
and a card has way too much mushy stuff.

so i got you this special little treat
to say that i hope your day is **suh-weeet!**

Glue or Tape Here



Glue or Tape Here

glue tabs
to inside
of the box

Glue or Tape Here

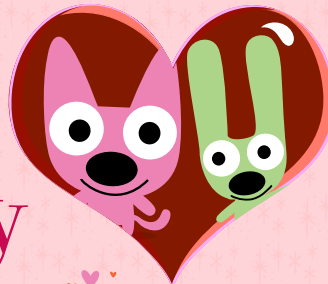


Glue or Tape Here

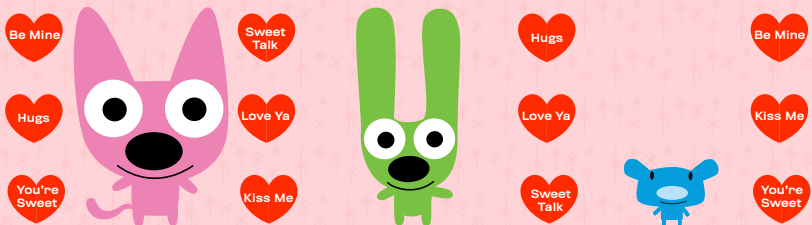


super-delicious
hoops&yoyo
love candy

with **AMAZING!** piddles love power



Glue or Tape Here



Glue or Tape Here

BOTTOM

"This project requires a knife and scissors. Adult supervision recommended."

TOP